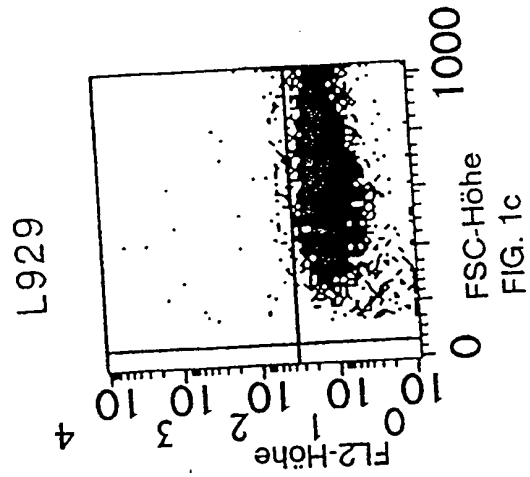
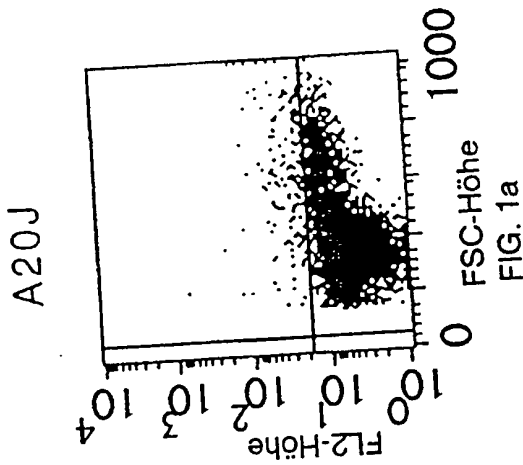
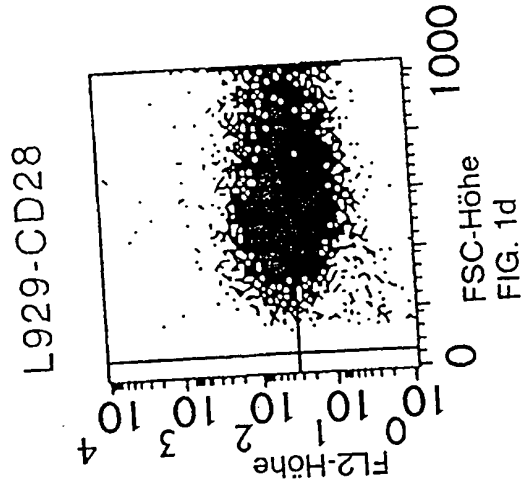
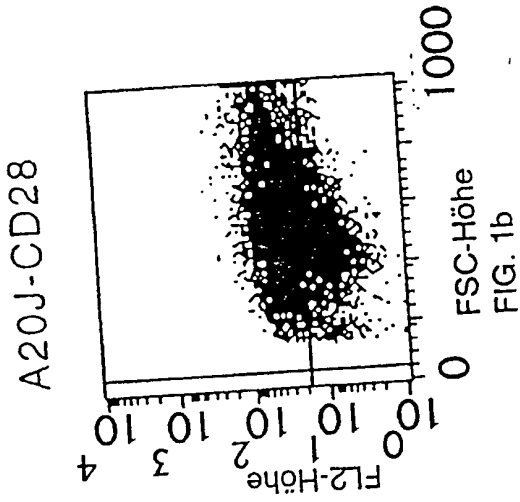


Publ. No. 4200000



ANTI-CD28-PE

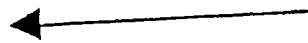
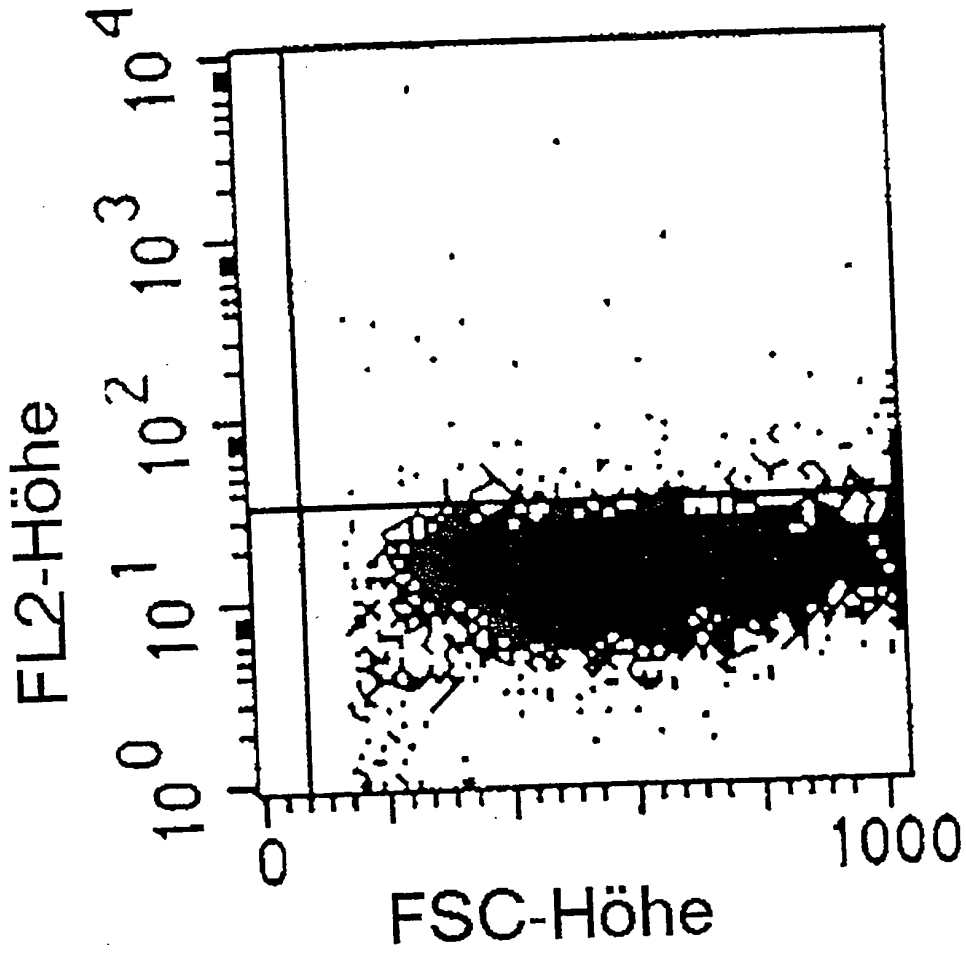
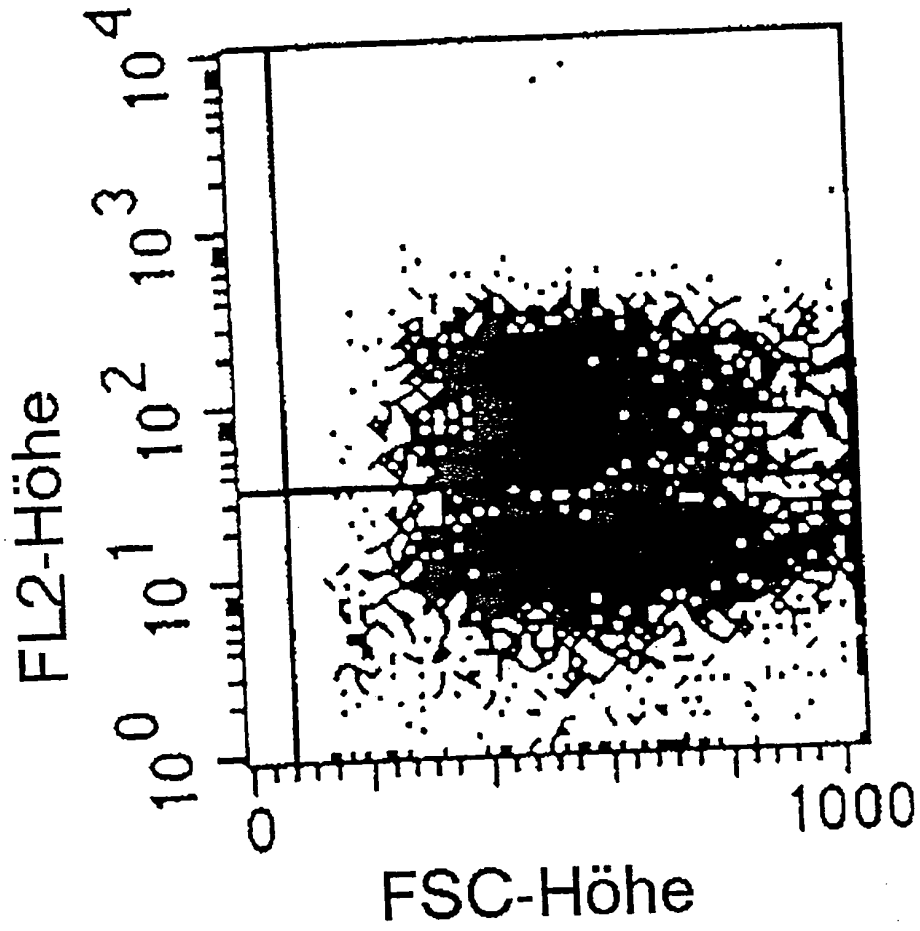


FIG. 2A



66444 446666

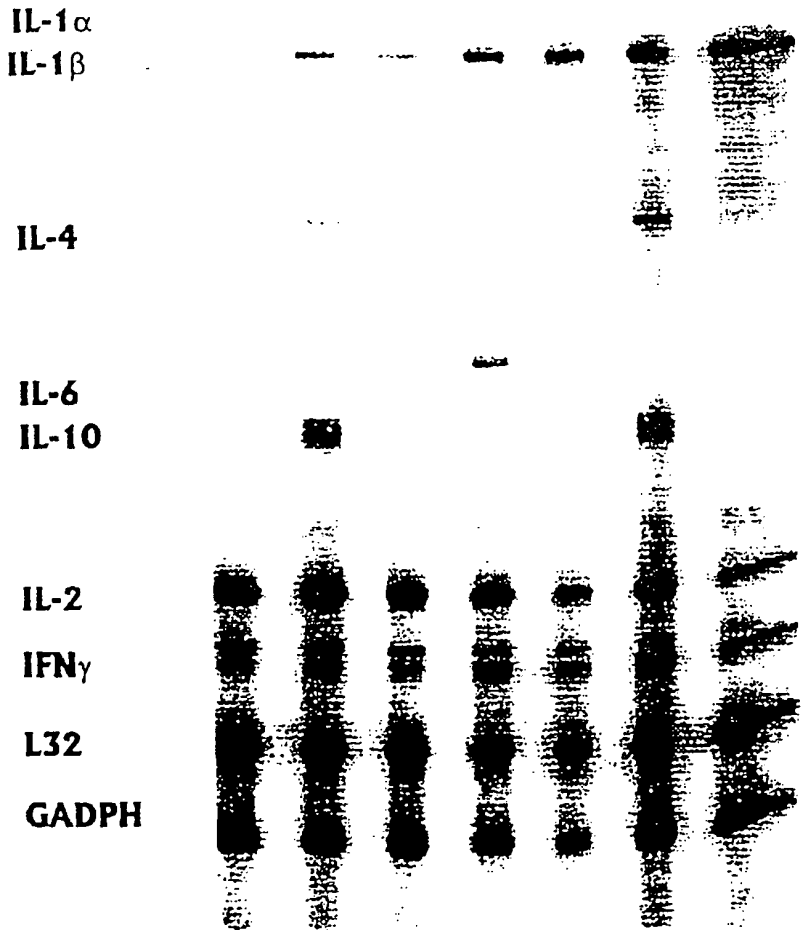
FIG. 2C



66427 2206160

FIG. 3

Lymph Knoten Milz
PBS JJ316 JJ319 R73 PBS JJ316 JJ319 R73

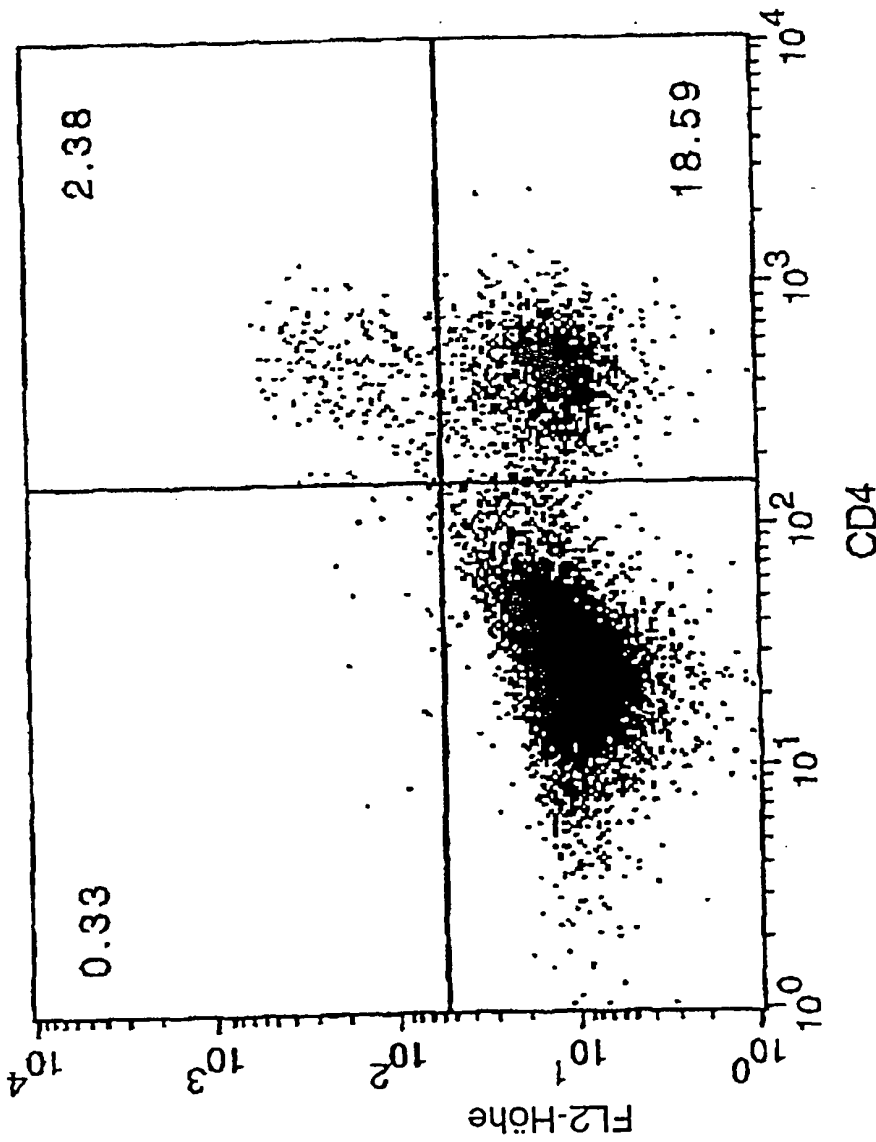


6644677 2206060

664677-2200000

Fig. 4b

JJ316



WO 98/34473

PCT/DE98/01499

8 / 14

661217-200000

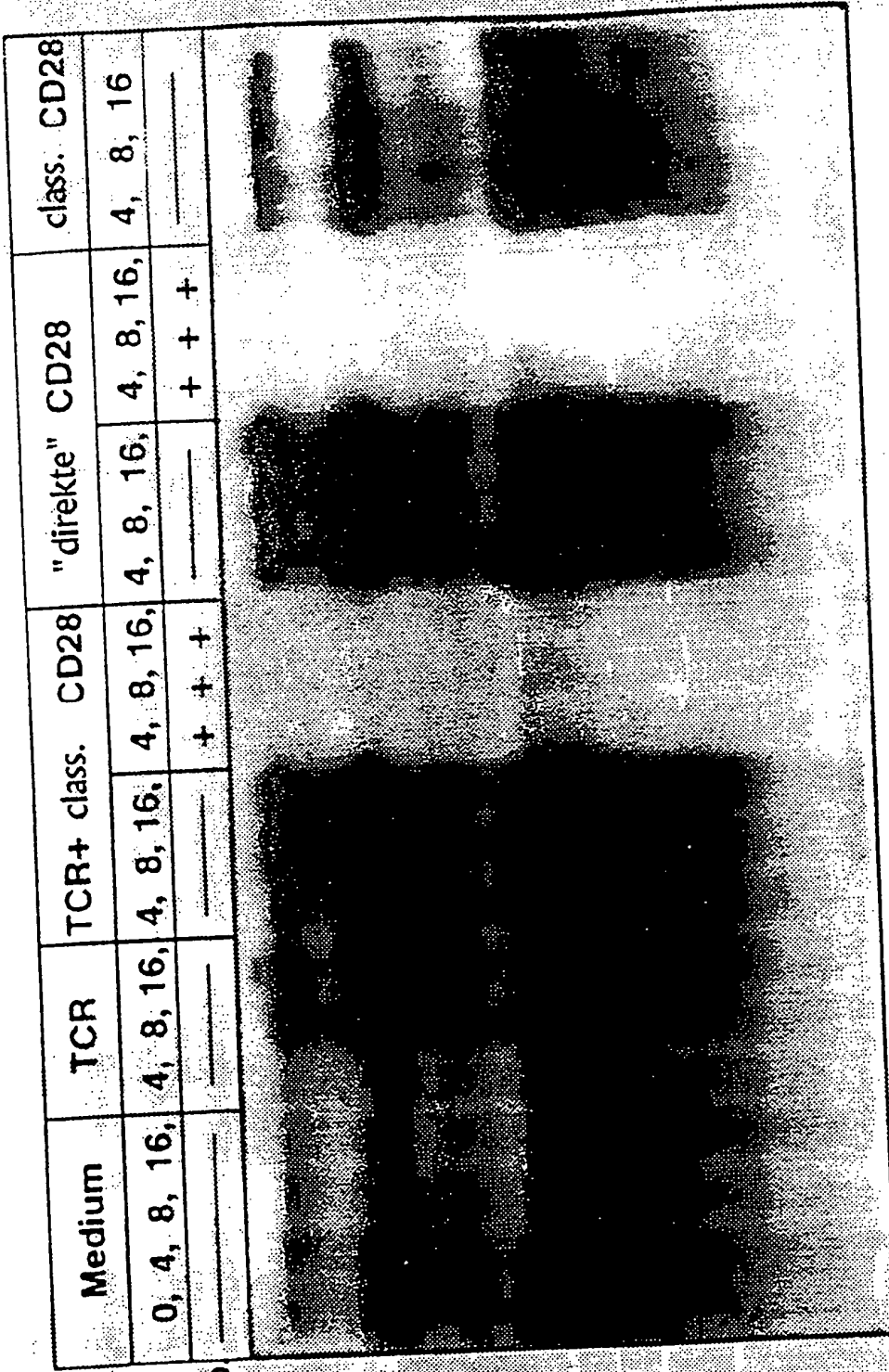
The graph plots IgE concentration in µg/ml on the y-axis against treatment weeks on the x-axis. Two data series are shown: subject 316 (solid line) and subject 319 (dashed line). Both start at approximately 10 µg/ml at week 1. Subject 316 reaches about 100 µg/ml by week 3. Subject 319 reaches about 80 µg/ml by week 2 and then rises sharply to approximately 120 µg/ml by week 3.

Wochen Behandl.	Subject 316 (µg/ml)	Subject 319 (µg/ml)
1	10	10
2	50	80
3	100	120

FIG. 5

ERSATZBLATT (REGEL 26)

"Blatt 91" / 2000

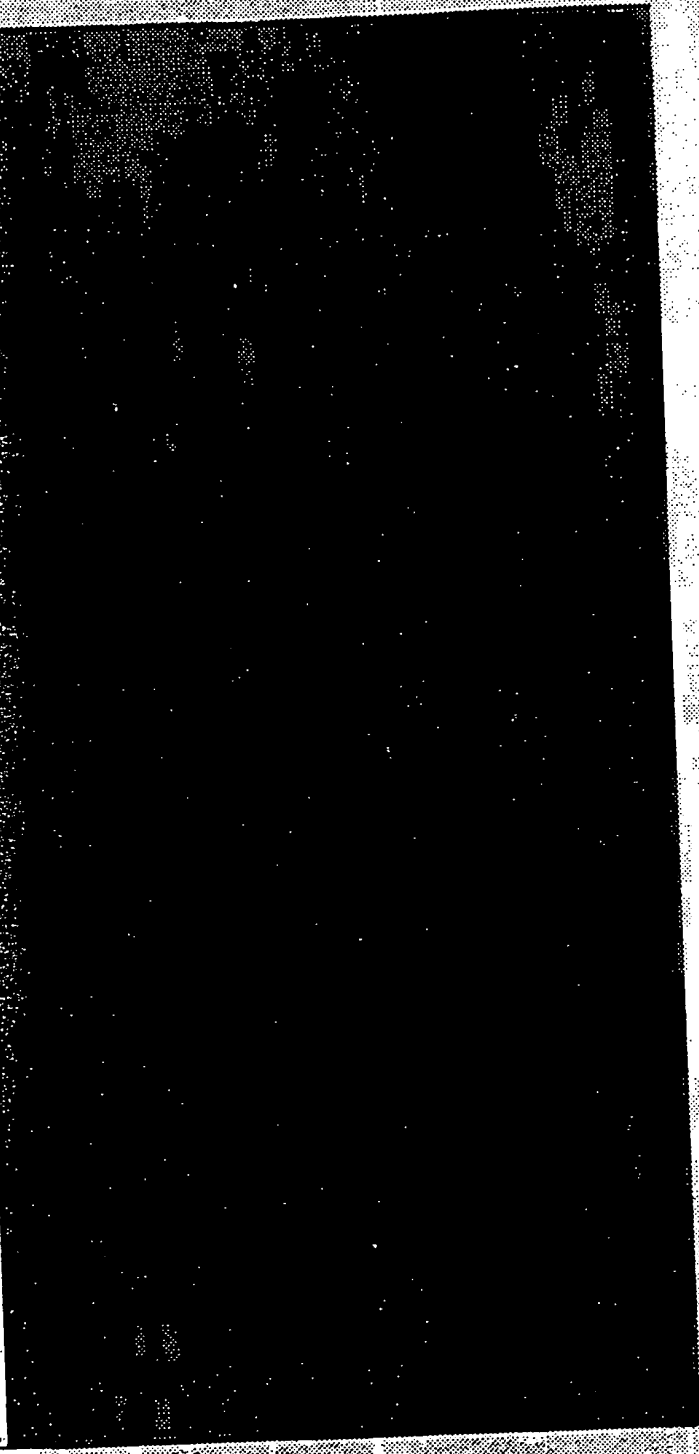


c-Maf

FIG. 6

SECRET

Stimuli	Medium	TCR	TCR+ class. CD28	"direkte" CD28	Klass. CD28
Zeit (h)	0, 4, 8, 16,	4, 8, 16,	4, 8, 16,	4, 8, 16,	4, 8, 16,
Spez. Komp.	—	—	+	—	+



GATA 3

FIG. 7

664677 4406460

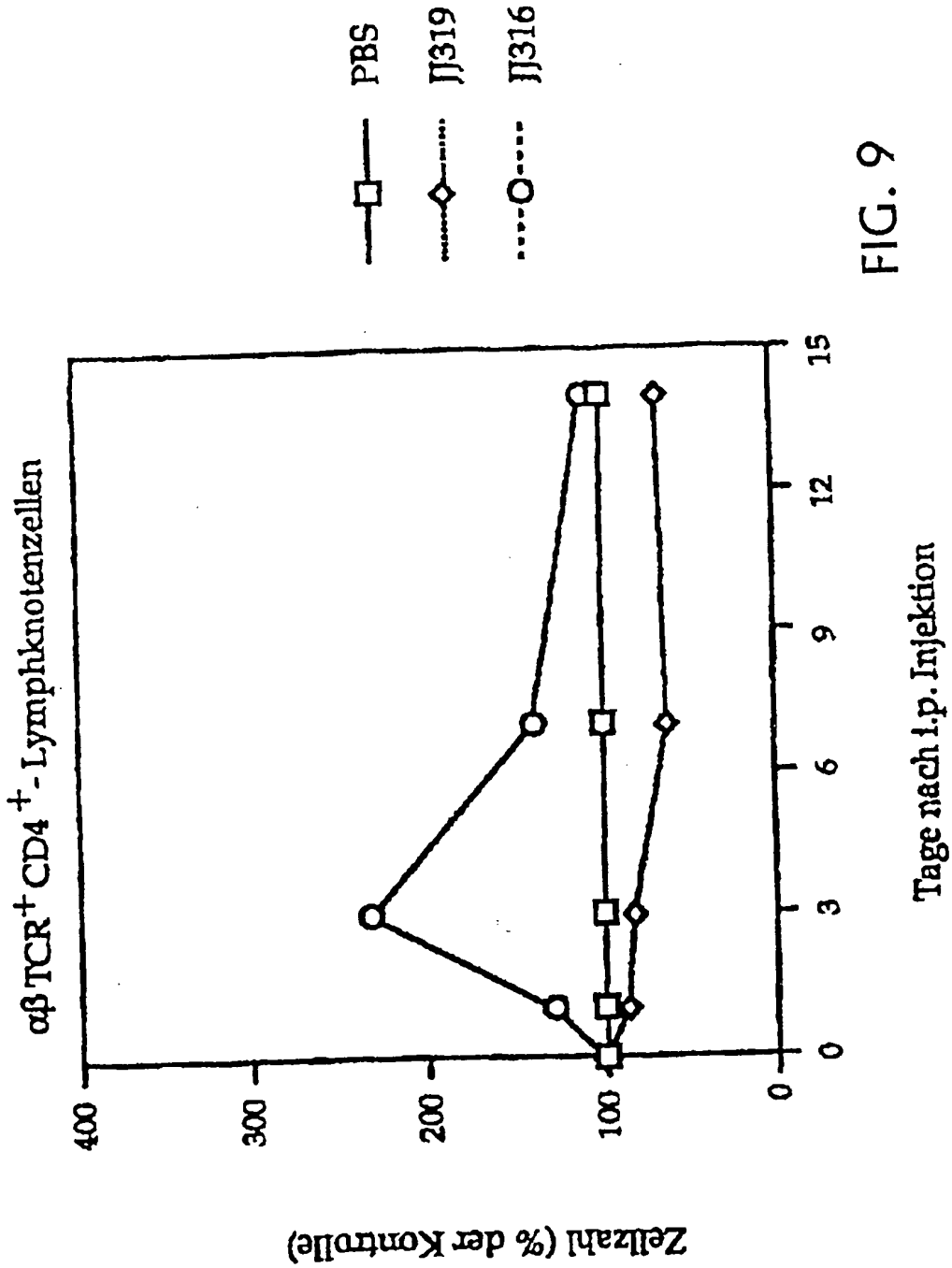


FIG. 9

Pfoten volumen Zunahme (%)

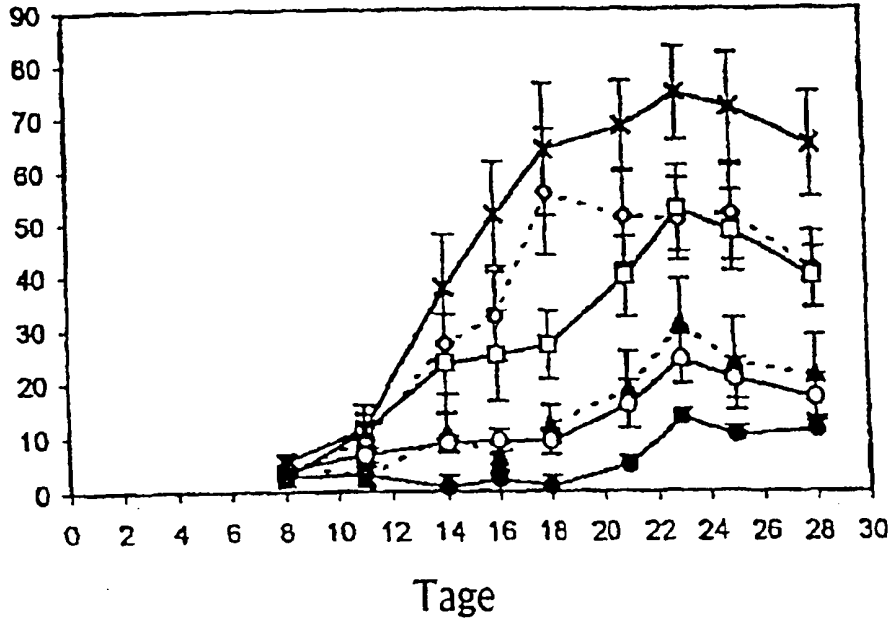
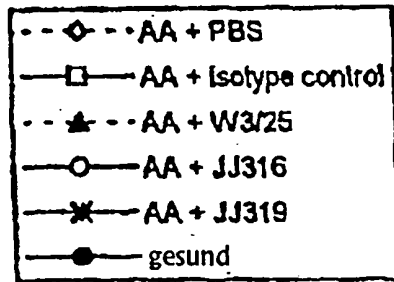


FIG. 10



Arthritik Index

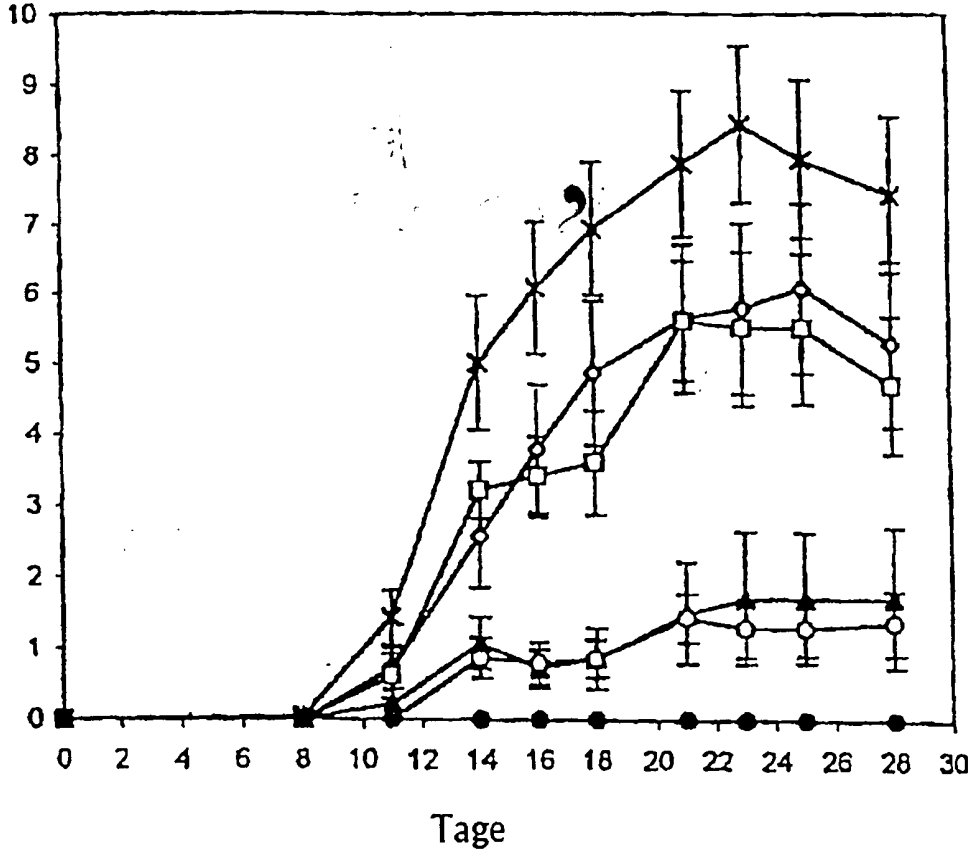


FIG. 11

